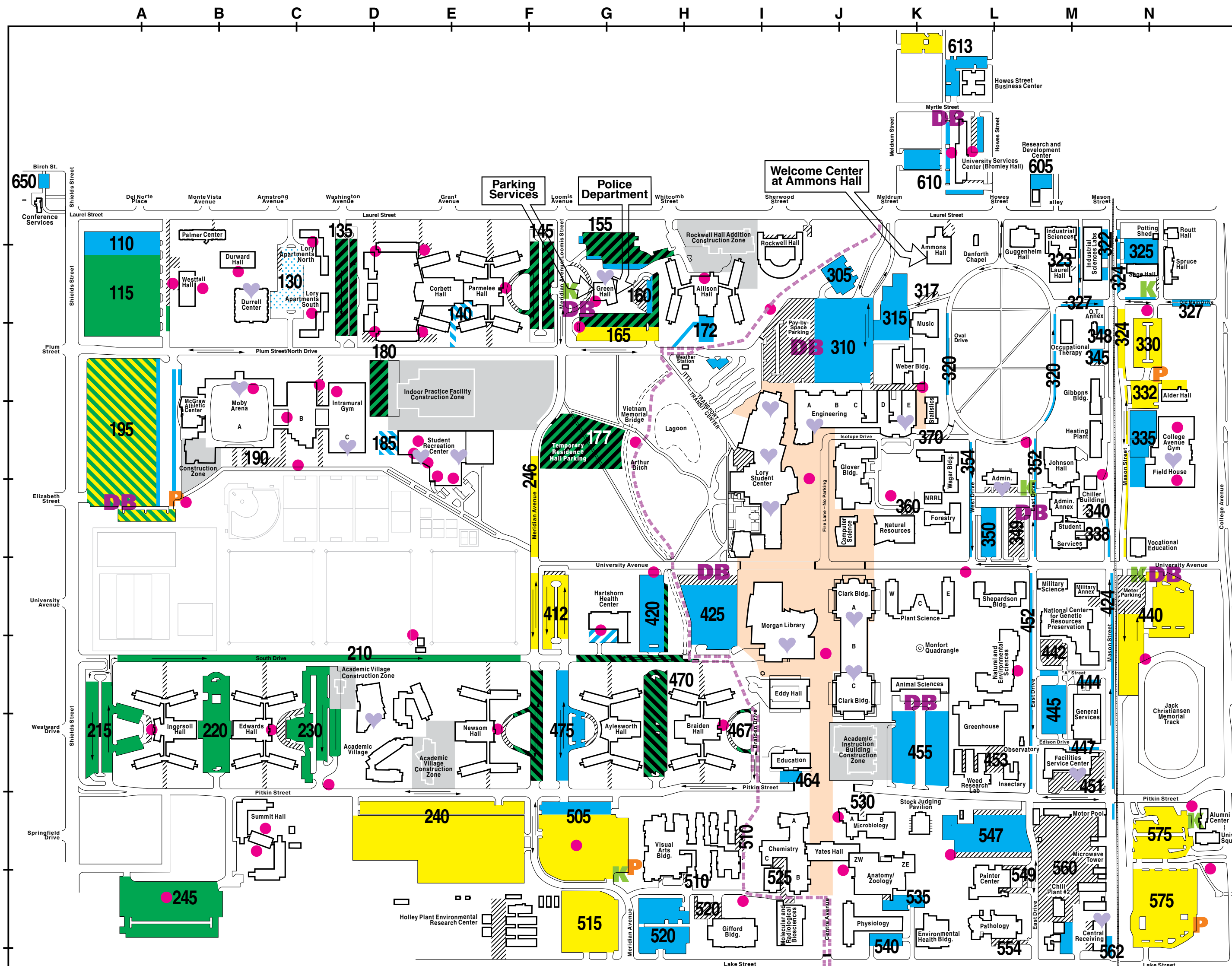
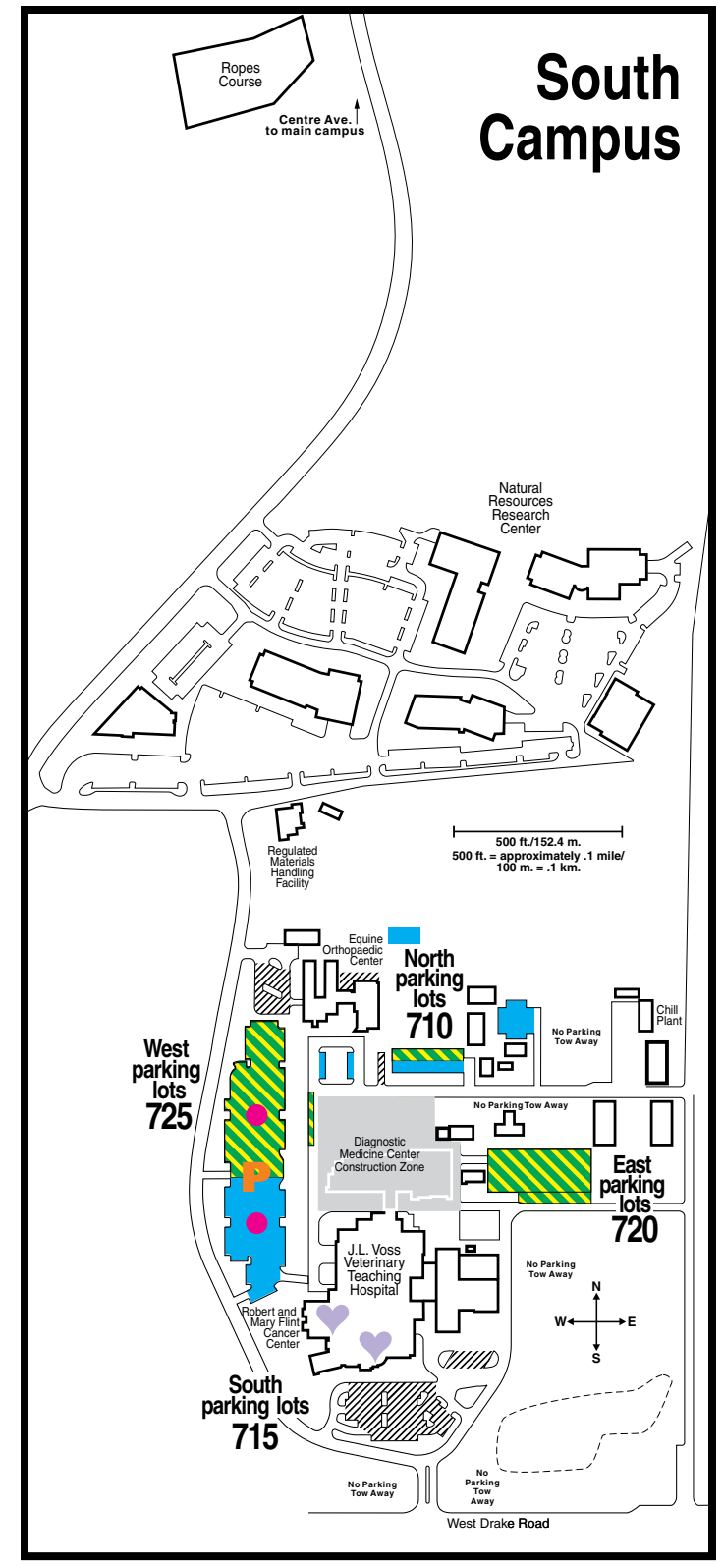


Main Campus

Academic Village	D-7
Administration	L-4
Alder Hall	M-4
Allison Hall	N-3
Alumni Center	N-9
Ammons Hall	K-1
Anatomy/Zoology	J-9
Animal Sciences	K-6
Aylesworth Hall	G-7
Braden Hall	H-7
Central Receiving	M-10
Chemistry	I-9
Clark Bldg.	J-6
Computer Science	J-5
Conference Services	A-1
Corbett Hall	E-1
Danforth Chapel	L-1
Durrell Center	B-2
Dunward Hall	B-1
Eddy Hall	I-7
Education	I-8
Edwards Hall	B-7
Engineering	J-3
Environmental Health Bldg.	K-10
Facilities Services Center	M-7
Field House	M-4
Forestry	K-4
General Services	M-7
Gibbons Bldg.	M-3
Gifford Bldg.	H-10
Glover Bldg.	J-4
Green Hall	G-1
Greenhouse	L-7
Guggenheim Hall	L-1
Gym College Ave.	N-4
Hartshorn Health Center	G-6
Heating Plant	M-3
Holley Plant Environmental Research Center	E-10
Howes Street Business Center	K-4
Industrial Sciences	M-1
Industrial Sciences Labs	M-1
Ingersoll Hall	A-7
Insectary	L-8
Intramural Gym	C-3
Johnson Hall	M-4
Laurel Hall	M-1
Lory Apartments North	C-1
Lory Apartments South	C-2
Lory Student Center	I-4
Microbiology	J-8
Military Annex	M-5
Military Science	M-5
Moby Arena	B-3
Molecular and Radiological Biosciences Bldg.	B-10
Morgan Library	I-6
Motor Pool	M-8
Music	K-2
National Center for Genetic Resources Preservation	M-6
Natural and Environmental Sciences Bldg.	L-6
Natural Resources	J-5
Natural Resources Research Lab	K-4
Newsom Hall	E-7
Observatory	L-7
Occupational Therapy	M-2
Occupational Therapy Annex	K-2
Palmer Center	I-9
Palmer Center	B-1
Parmelee Hall	F-10
Pathology	L-10
Physiology	J-10
Plant Science	K-6
Research and Development Center	L-M
Rockwell Hall	I-1
Routt Hall	N-1
Sage Hall	N-1
Shepardson	L-5
Spruce Hall	N-1
Statistics	K-3
Stock Judging Pavilion	K-8
Student Recreation Center	E-4
Student Services	M-5
Summit Hall	B-9
University Services Center	K-L
University Square	N-9
Visual Arts	H-8
Vocational Education	N-5
Wagar Bldg.	K-4
Weber Bldg.	K-2
Weed Research Lab	L-8
West Hall	A-2
Yates Hall	J-9



South Campus

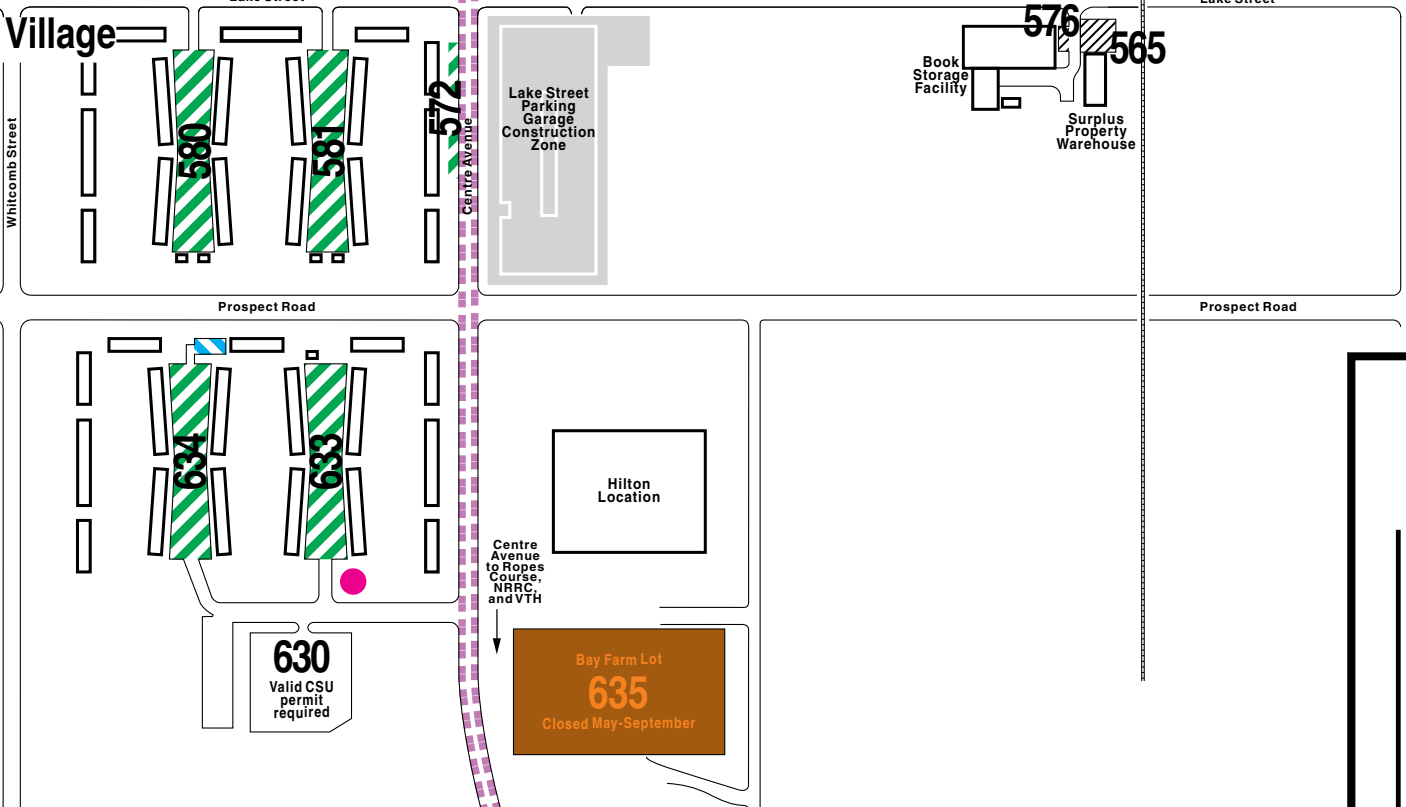


Lot Enforcement

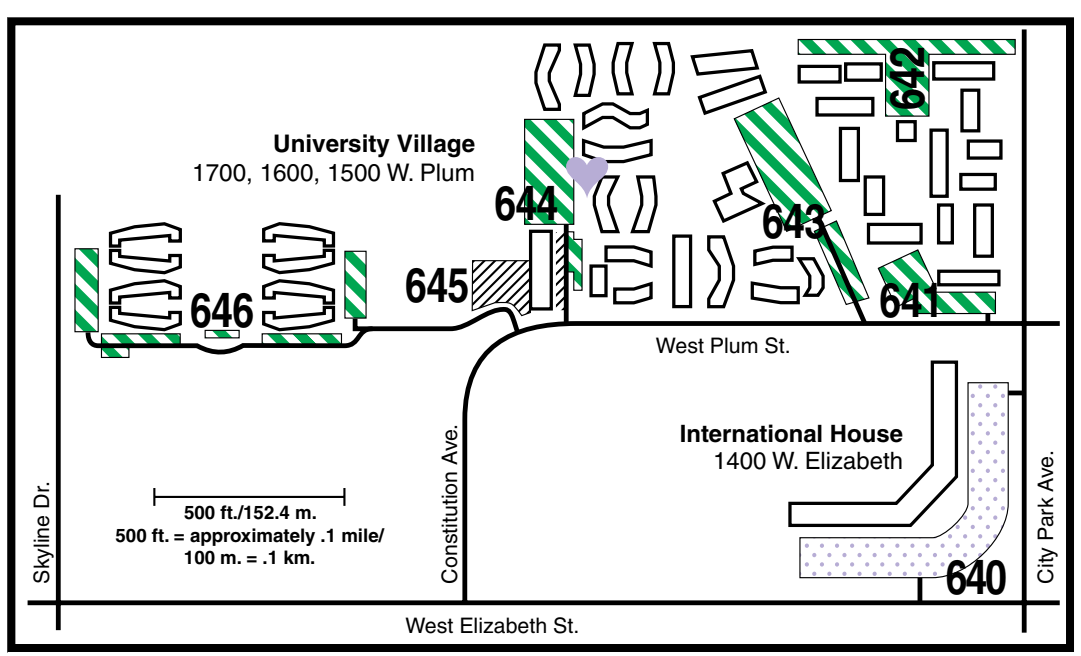
Parking Lots	Times and Days Restricted
A lots	7:30 a.m. to 4:00 p.m. Monday through Friday, except for University Holidays when ALL University offices are closed. Please be aware of specially signed portions of "A" lots which are enforced until 7:00 p.m. in lots 310, 350, and 425.
Meters/Pay-by-Space	7:30 a.m. to 4:00 p.m. Monday through Friday, except for University Holidays when ALL University offices are closed.
B, D, F, I, S, T, U, Client, Handicap stalls, Load zones, Timed lots, Construction lots, Safety areas, and Special Parking areas	As posted at all times.
Q, W, and X lots	7:30 a.m. to 8:00 p.m. Monday through Friday, except for University Holidays when ALL University offices are closed and Summer Session. Enforcement begins first day of classes and ends last day of finals for Fall and Spring semesters.
Z lots	7:30 a.m. to 4:00 p.m. Monday through Friday, except for University Holidays when ALL University offices are closed and Summer Session. Enforcement begins first day of classes and ends last day of finals for Fall and Spring semesters.
Bay Farm lot	7:30 a.m. to 4:00 p.m. Monday through Friday, except for University Holidays when ALL University offices are closed. Enforcement begins first day of classes and ends last day of finals for Fall and Spring semesters. This lot is closed from May through September.
Moby Arena lot	Moby Arena is a special event lot. Parking is restricted during special event dates and is posted in the lot. All other times the lot is regularly enforced.

Parking Lots

- A - Lot (Faculty/Staff Parking)
- B - Lot (Restricted Staff Parking)
- D - Lot (Restricted Physician Parking)
- I - Lot (Student Family Housing Parking)
- Q - Lot (Resident Student Parking)
- S - Lot (Student Family Housing Parking)
- T - Lot (Student Family Housing Parking)
- U - Lot (Lory Apartments Parking)
- W - Lot (Resident Student Parking)
- X - Lot (Resident Student Parking)
- X/Z - Lot
- Z - Lot (Commuter Student Parking)
- Bay Farm (closed May-September)
- Restricted by Time and/or Use (meters, pay-by-space, load zones)
- Emergency Phones, Exterior Residence Hall Phones
- Automated External Defibrillator (AED) locations
- Drop Box for Ticket Payment
- Permit Dispenser
- Kiosk
- Bike Path
- Bike Dismount Zones



University Village and International House



*NOTE: This map is current as of January, 2009. Notice of changes made during the year will be published through campus communications. This map is intended to show only approximate locations and limits of parking lots. All vehicle operators are required to comply with specific signs posted on campus. Campus speed limits are 20 mph on streets and 10 mph in parking lots.